



- *Operating distance reaching 4 m proximity and up to 20 or 100 m on reflector*
- *4-digit display for measurement and parameter indications*
- *Double NPN or PNP output, 4-20 mA analogue output, RS485 interface*
- *Sturdy IP67 metal housing and standard M12 8-pole connector*

S80L-Y SERIES

The **S80L-Y** series, in the compact sturdy metal housing, offers innovative class 2 laser distance sensors with time of flight measurement. This technology, based on the measurement of the time between the emission and receipt of the laser light pulses, effects accurate distance detection.

The **S80L-Y0** sensor functions as proximity on a 0.3 - 4 m distance in object positioning or detection applications, for example as double-threshold background suppression up to 4 m.

The **S80L-Y1** and **S80L-Y2** sensors, with operating distances reaching 20 or 100 m, function as retroflex measuring the distance from a reflector mounted on the object to detect and are ideal for position applications in automatic warehouses or goods handling lines in general.

The **S80L-Y** sensors have two switching outputs, available in both the NPN and PNP models, that can be set at different distances, while the measurement value is supplied on the 4-20 mA analogue output and RS485 serial interface; the latter can be also used to set all the parameters.

A 4-digit display visualises the distance, as well as all the parameters that can be set with the three push-buttons.

Y DISTANCE SENSORS

The laser distance sensors with time of flight measurement are suitable for long distance measurements offering constant performances on the entire field.

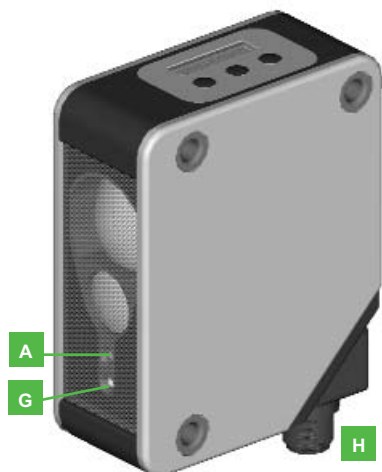
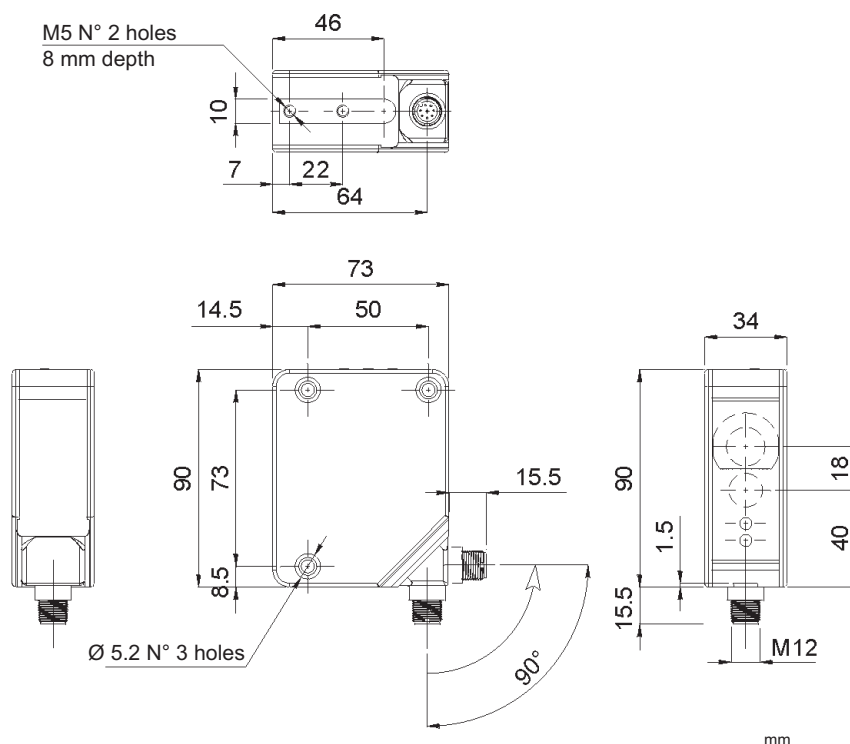
The maximum measurement and detection error depends on the application characteristics and different factors.

In particular, the linearity indicates the maximum deviation of the analogue output respect to the ideal value and is expressed in percentage of full range.

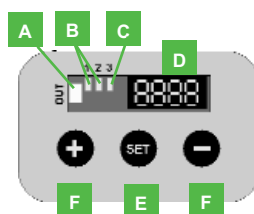
Whereas the temperature drift indicates the maximum deviation in relation to the sensor temperature variation and is expressed in mm/°C.

Lastly, the repeatability represents the variation interval of the measurement made different times on the target at the same distance.

DIMENSIONS



INDICATORS AND SETTINGS



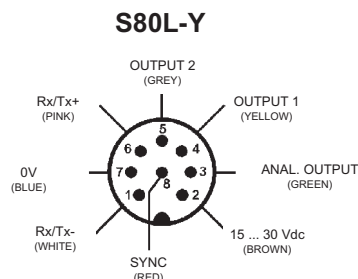
- A** Output 'OR' function LED
- B** Output status LED
- C** Response time LED
- D** 4-digit display
- E** SET push-button
- F** +/- selection push-buttons
- G** Alarm LED
- H** M12 connector output, orientable on 2 positions

ACCESSORIES

For dedicated accessories refer to the **ACCESSORIES** section of this catalogue.

Refer also to **Connectors** and **Fixing Brackets** of the **General Catalogue**.

CONNECTIONS



NOTE: the wire colours refer to the cables manufactured according to the European standard



TECHNICAL DATA

		S80-MH-5-Y09-PPIZ	S80-MH-5-Y09-NNIZ	S80-MH-5-Y19-PPIZ	S80-MH-5-Y19-NNIZ	S80-MH-5-Y29-PPIZ	S80-MH-5-Y29-NNIZ
Measurement range:	refer to table 1						
Maximum measurement error:	refer to table 1						
Linearity:	refer to table 1						
Repeatability:	refer to table 1						
Switching output hysteresis:	refer to table 1						
Temperature drift:	refer to table 1						
Resolution:	< 3 mm	●	●				
Power supply:	15 ... 30 Vdc ²	●	●	●	●	●	●
Ripple:	2 Vpp max.	●	●	●	●	●	●
Consumption:	110 mA max. @ 24 Vdc	●	●	●	●	●	●
Light emission:	red Laser 665 nm, class 2 ³	●	●	●	●	●	●
Setting:	SET push-button	●	●	●	●	●	●
	+/- push-button	●	●	●	●	●	●
Indicators (on command panel):	4-digit display	●	●	●	●	●	●
	yellow OUTPUT LED	●	●	●	●	●	●
	green OUTPUT STATUS LED	●	●	●	●	●	●
	green FAST mode LED	●	●	●	●	●	●
Indicators (on front):	yellow OUTPUT LED	●	●	●	●	●	●
	red ALARM LED	●	●	●	●	●	●
Output type:	2 PNP, NO	●	●	●	●	●	●
	2 NPN, NO		●		●		●
	4 ... 20 mA analogue	●	●	●	●	●	●
Output current:	≤ 100 mA	●	●	●	●	●	●
Saturation voltage:	≤ 2 V	●	●	●	●	●	●
Response time:	5 ms (NORMAL)	●	●	●	●	●	●
	1 ms (FAST)	●	●	●	●	●	●
Switching frequency:	100 Hz (NORMAL)	●	●	●	●	●	●
	500 Hz (FAST)	●	●	●	●	●	●
Timing function:	selectable between 5, 10, 20, 30 e 40 ms	●	●	●	●	●	●
Auxiliary functions:	synchronism (SYNC)	●	●	●	●	●	●
	keylock ⁴	●	●	●	●	●	●
	RS485 serial interface	●	●	●	●	●	●
Connection:	M12 8-pole connector ⁵	●	●	●	●	●	●
Electrical protection:	class 2	●	●	●	●	●	●
Mechanical protection:	IP67	●	●	●	●	●	●
Protection devices:	A, B ⁶	●	●	●	●	●	●
Housing material:	aluminium	●	●	●	●	●	●
Lens material:	glass	●	●	●	●	●	●
Weight:	330 g max.	●	●	●	●	●	●
Operating temperature:	-10 ... +50°C	●	●	●	●	●	●
Storage temperature:	-25 ... +70°C	●	●	●	●	●	●
Reference standard:	EN 60947-5-2, EN 60825-1	●	●	●	●	●	●

SELECTION TABLES

distance sensor		
S80-MH-5-Y09-PPIZ	951501000	PNP
S80-MH-5-Y09-NNIZ	951501010	NPN
S80-MH-5-Y19-PPIZ	951501020	PNP
S80-MH-5-Y19-NNIZ	951501030	NPN
S80-MH-5-Y29-PPIZ	951501040	PNP
S80-MH-5-Y29-NNIZ	951501050	NPN

table 1	S80L-Y0	S80L-Y1	S80L-Y2
operating distance	0.3-4m*	0.3-20.3m**	0.3-100.3m**
maximum error	±1.2cm	±5cm	±15cm
linearity	0.3 % ¹	0.25 %	0.15 %
repeatability	2mm NORM 6mm FAST	10mm NORM 12mm FAST	30mm NORM 40mm FAST
digital output	5mm NORM 10mm FAST	25mm NORM 35mm FAST	40mm NORM 60mm FAST
hysteresis			
temperature drift (mm/°C)	±0.6	±1.5	±2

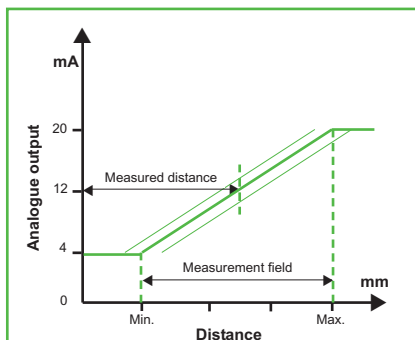
* from white 90% to 18% grey target
** on R80 reflector

TECHNICAL NOTES

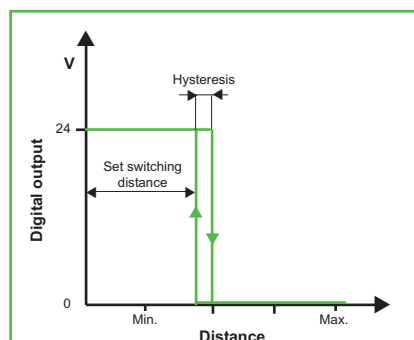
- @ 24 Vdc and 90 % white target, 25 °C
- Limit values
- Average life of 100.000 h with $T_A = +25 °C$
- Active with SYNC wire connected to + Vdc for at least 1 s at powering
- Connector can be blocked in two positions
- A - reverse polarity protection
B - overload and short-circuit protection



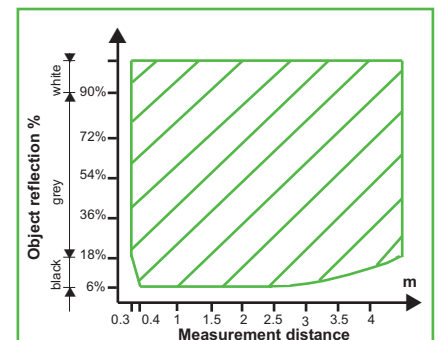
DETECTION DIAGRAMS



Analogue output



1 or 2 digital output



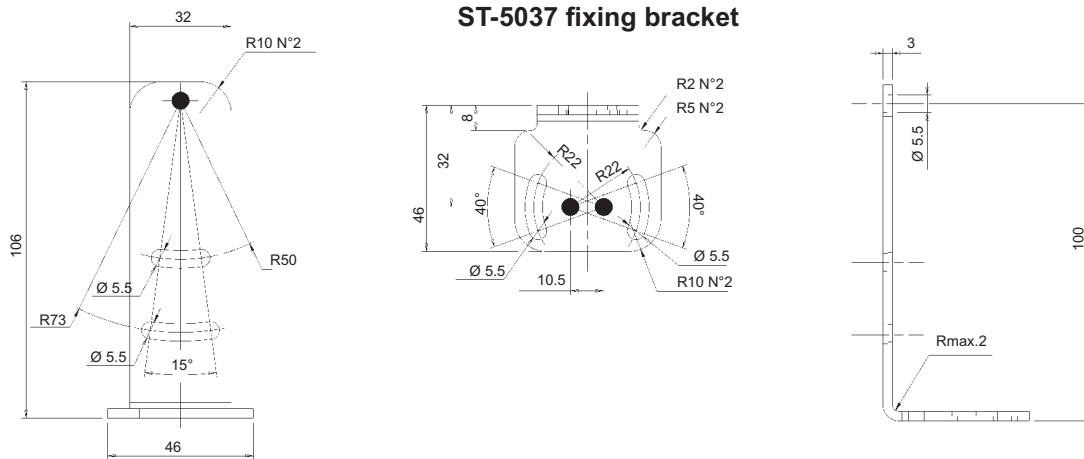
Measurement distance according to object reflection degree (S80L-Y0)

MODEL SELECTION TABLE

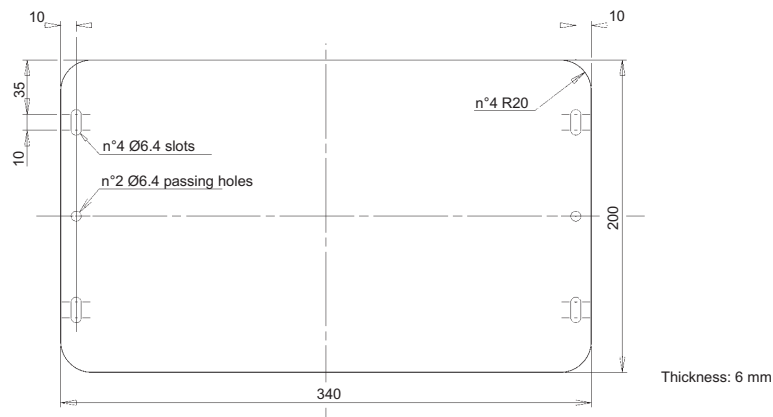
MODEL	MAX. DISTANCE	REFLECTOR	CONNECTION	OUTPUT	N° ORDER
S80-MH-5-Y09-PPIZ	4 m	no	M12 connector	PNP	951501000
S80-MH-5-Y09-NNIZ	4 m	no	M12 connector	NPN	951501010
S80-MH-5-Y19-PPIZ	20 m	yes	M12 connector	PNP	951501020
S80-MH-5-Y19-NNIZ	20 m	yes	M12 connector	NPN	951501030
S80-MH-5-Y29-PPIZ	100 m	yes	M12 connector	PNP	951501040
S80-MH-5-Y29-NNIZ	100 m	yes	M12 connector	NPN	951501050

ACCESSORIES

DIMENSIONS



R80 reflector



mm

ACCESSORY SELECTION TABLE

MODEL	DESCRIPTION	N° ORDER
ST-5037	'L' shaped fixing bracket	95ACC2260
R80 *	distance sensor reflector	95A151210

Refer also to Accessories for Sensors

CS-A1-06-B-03	M12 8-pole conn. with 3 m unshielded cable	95ACC2230
CS-A1-06-B-05	M12 8-pole conn. with 5 m unshielded cable	95ACC2240
CS-A1-06-B-10	M12 8-pole conn. with 10 m unshielded cable	95ACC2250

* supplied with the product

Distributed by:



HEADQUARTERS

DATASENSOR SpA

via Lavino, 265 - 40050 Monte San Pietro, BO - Itay
Tel. +39 051/6765611 • Fax +39 051/6759324
www.datasensor.com • e-mail info@datasensor.com

Datasensor SpA endeavours to continuously improve and renew its products; for this reason the technical data and contents of this catalogue may undergo variations without prior notice. For correct installation and use Datasensor SpA can guarantee only the data indicated in the instruction manual supplied with the products.

DISTANCE SENSORS